

SECTION 16, T.7N., R.3E., S.L.B. & M.

IN WEBER COUNTY
SCALE 1" = 400

TAXING UNIT: 520

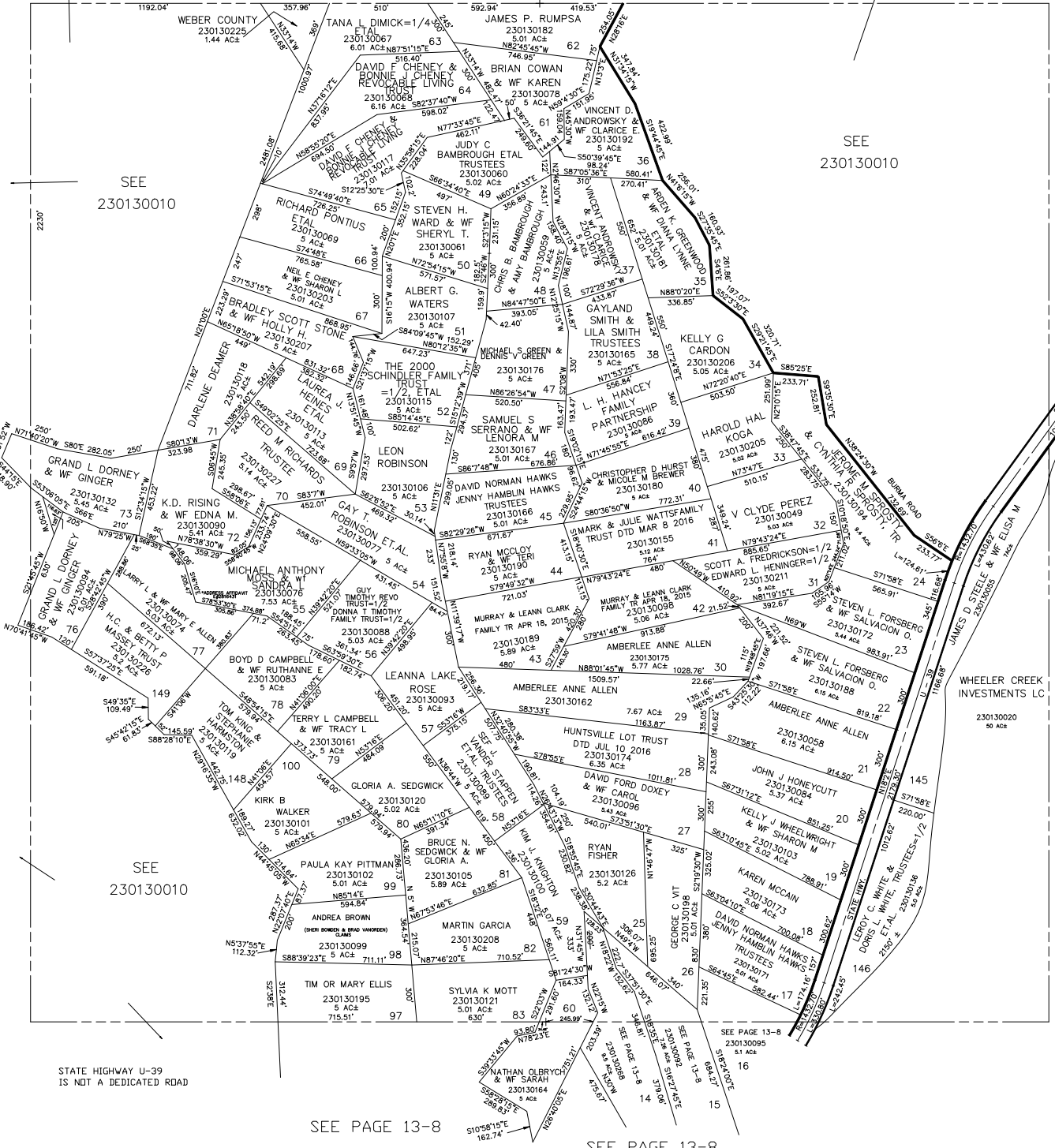
SEE PAGE 13

SEE
230130010

SEE
230130010

SEE PAGE 13

SEE PAGE 13-4



STATE HIGHWAY U-39
IS NOT A DEDICATED ROAD

SEE PAGE 13-8

SEE PAGE 13-8